



Glyph Dwellers

Report 28

October 2015

A New Drawing of the Inscribed Jade Pendant in the American Museum of Natural History, New York

Matthew Looper
Yuriy Polyukhovych

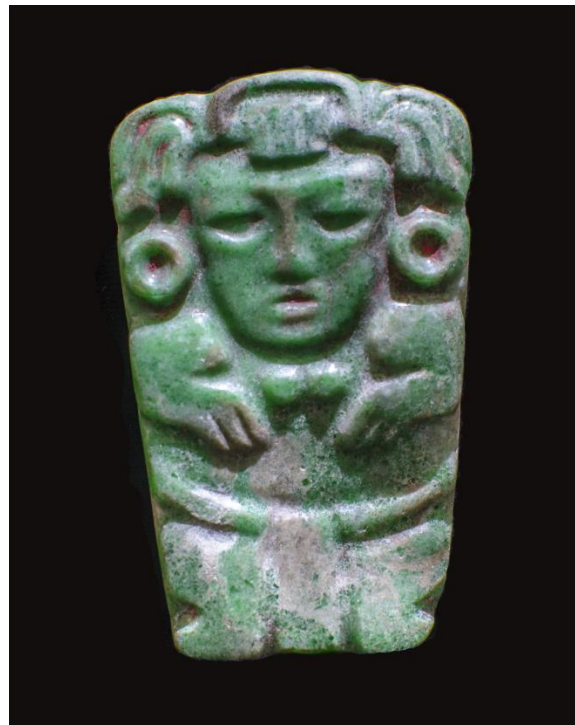
Department of Art and Art History, California State University Chico

Recently, we were given the opportunity to examine and photograph the jade pendant collected by Teobert Maler on Jaina Island, now in the American Museum of Natural History, New York (**Figs. 1, 2**; accession number: 30.0/3011). The text of this object has been drawn several times since its initial publication in in Herbert Spinden's *A Study of Maya Art* (Spinden 1913:144, fig. 196; Tokovinine 2012:125–127, Fig. 68a). However, having been able to document this object carefully, we were able to observe a number of small details, which are rendered in the drawing published here (**Fig. 3**).

Because the inscription of this object has been discussed in detail elsewhere, only a summary is presented here. The inscription is a “name tag”-type text that ascribes ownership of the pendant to Waxaklajuun Ubaah Sak Bahlam Jol, who is also mentioned on a number of other jade and shell objects (see García Campillo 1995:158, 213–214, 1998:48–49; Tokovinine 2012:125–127). Importantly, the AMNH jade inscription mentions the father of Waxaklajuun Ubaah Sak Bahlam Jol as ?? Ch'o' Jol. The same person is also mentioned as the overlord of the *ajk'uhuun* (priest/guardian) who originally owned the travertine vessel in the Dumbarton Oaks collection (PC.B.147).



A1	yu-UH	yujal	his pendant
B1	18 u-BAAH	Waxaklajuun Ubaah	Waxaklajuun Ubaah
A2	SAK BAHLAM? JOL?	Sak Bahlam? Jol?	Sak Bahlam Jol
B2	ch'o-ko	ch'ok	youth
A3	u-MOOK?-li	umookil?	he is the son of
B3	?? CH'O'? JOL	?? Ch'o'? Jol	?? Ch'o' Jol
A4	K'UH KAN AJAW	k'uhul Kan ajaw	holy Kan (Jaina?) ajaw
B4	BAAH ka-ba	baah kab	first on earth?



Figs. 1, 2. American Museum of Natural History Anthropology catalog 30.0/3011. Jade pendant, back and front. Photographs by Yuriy Polyukhovych, 2015.

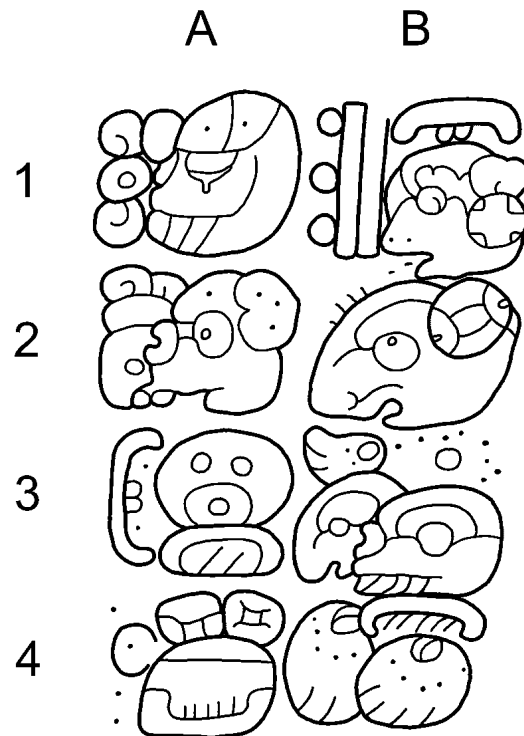


Fig. 3. American Museum of Natural History Anthropology catalog 30.0/3011. Jade pendant. Drawing of inscription by Matthew Looper, 2015.

Acknowledgment: We would like to thank Sumru Aricanli for allowing us to examine and photograph this object. We also thank Thomas Tolles for assistance with image preparation.

References

García Campillo, José Miguel

1995 Antroponimia y toponimia en las inscripciones mayas clásicas de Yucatán. Ph.D. dissertation. Departamento de Historia de América II (Antropología de América), Universidad Complutense de Madrid, Madrid.

1998 Datos epigráficos para la historia de Jaina durante el periodo clásico. *Los investigadores de la cultura maya* 6(1): 46–62.

Spinden, Herbert J.

1913 *A Study of Maya Art: Its Subject Matter and Historical Development*. Vol. 6. Memoirs of the Peabody Museum of American Archaeology and Ethnology. Harvard University.

Tokovinine, Alexandre

2012 Fluted and Incised Bowl. In *Ancient Maya Art at Dumbarton Oaks*, edited by Joanne



Pillsbury, Miriam Doutriaux, Reiko Ishihara-Brito, and Alexandre Tokovinine, pp. 121–129. Pre-Columbian Art at Dumbarton Oaks 4. Dumbarton Oaks Research Library and Collection, Trustees for Harvard University, Washington, D. C.



Glyph Dwellers is an occasional publication of the Maya Hieroglyphic Database Project at California State University, Chico, California. Its purpose is to make available recent discoveries about ancient Maya culture, history, iconography, and Mayan historical linguistics deriving from the project.

Funding for the Maya Hieroglyphic Database Project is provided by the National Endowment for the Humanities, grants #RT21365-92, RT21608-94, PA22844-96, the National Science Foundation, grants #SBR9710961 and IBSS1328928, the Department of Native American Studies, University of California, Davis, and the Department of Art and Art History, California State University, Chico.

(c) 2015 Matthew G. Looper. All rights reserved. Written material and artwork appearing in these reports may not be republished or duplicated for profit. Citation of more than one paragraph requires written permission of the publisher. No copies of this work may be distributed electronically, in whole or in part, without express written permission from the publisher.

ISSN 1097-3737